



中国智能汽车指数测评结果

China Intelligent Vehicle Index Rating Results

(2023年第四批)

(Batch 4 in 2023)

中国 · 重庆

Chongqing · China

2024年1月

1, 2024



智己 LS7 2023款

77kWh Urban Fit后驱版



车辆类型
Vehicle Type

纯电动多用途乘用车

整车型号
Vehicle Model

CSA6501LBEV5

生产厂家
Manufacturer

上海汽车集团股份有限公司

制造年月
Manufacture Date

2023-06

能源类型
Energy Type

纯电动

系统版本
System Version

IMOS 2.3.0(P01MBY0)

车辆识别代号
VIN

LSJWL4095PS071425

环境感知传感器

Environment Perception Sensor

传感器类型
Sensor Type

数量
Qty

摄像头
Camera

11

激光雷达
Laser Radar

0

毫米波雷达
Millimeter-Wave Radar

5

超声波雷达
Ultrasonic-Wave Radar

12



智己 LS7 2023款

77kWh Urban Fit后驱版



> 智能行车
Intelligent Driving



> 智能安全
Intelligent Safety



> 智能泊车
Intelligent Parking



> 智能交互
Intelligent Interaction



> 智能能效
Intelligent Energy Efficiency



优秀	良好	一般	较差
Good	Acceptable	Marginal	Poor



智己 LS7 2023款

77kWh Urban Fit后驱版

单车道纵向 控制能力

Single-Lane Longitudinal
Control Capability

21分 (满分22.5分)

21 points (out of 22.5 points)

单车道横向 控制能力

Single-Lane Lateral
Control Capability

1分 (满分1分)

1 point (out of 1 point)

单车道纵横 向控制能力

Single-Lane Combined
Longitudinal and Lateral

2.8分 (满分4分)

2.8 points (out of 4 points)

换道辅助能力

Lane-Change Assistance
Capability

1.5分 (满分1.5分)

1.5 points (out of 1.5 points)

关联功能

Correlation Function

0分 (满分2分)

0 points (out of 2 points)

用户手册审查

Review of User Manual

1分 (满分1分)

1 point (out of 1 point)

智能行车总得分

Total Score of Intelligent Driving

27.3分/85%

27.3 points/85%



G 优秀 A 良好 M 一般 P 较差
G Good A Acceptable M Marginal P Poor



智己 LS7 2023款

77kWh Urban Fit后驱版

车对车自动紧急制动系统

AEB C2C System

21分 (满分22分)

21 points (out of 22 points)

行人与骑行者自动紧急制动系统

AEB VRU System

56分 (满分56分)

56 points (out of 56 points)

车道辅助系统

Lane Keeping Assist System

14分 (满分14分)

14 points (out of 14 points)

侧向辅助系统

Blind Spot Detection

14.5分 (满分15分)

14.5 points (out of 15 points)

智能安全总得分

Total Score of Intelligent Safety

105.5分/99%

105.5 points/99%



G 优秀	A 良好	M 一般	P 较差
G Good	A Acceptable	M Marginal	P Poor



智己 LS7 2023款

77kWh Urban Fit后驱版

泊车能力

Parking Capability

24.75分 (满分27分)
24.75 points (out of 27 points)

新功能

New Function

0.5分 (满分2分)
0.5 points (out of 2 points)

用户手册审查

Review of User Manual

1分 (满分1分)
1 point (out of 1 point)

智能泊车总得分

Total Score of Intelligent Parking

26.25分/88%

26.25 points/88%



G 优秀 A 良好 M 一般 P 较差
G Good A Acceptable M Marginal P Poor



智己 LS7 2023款

77kWh Urban Fit后驱版

语音交互

Voice Interaction

17.6分 (满分19分)

17.6 points (out of 19 points)

触屏交互

Touch Screen Interaction

14.5分 (满分15分)

14.5 points (out of 15 points)

智能交互总得分

Total Score of Intelligent Interaction

32.1分/94%

32.1 points/94%



G 优秀	A 良好	M 一般	P 较差
G Good	A Acceptable	M Marginal	P Poor



智己 LS7 2023款

77kWh Urban Fit后驱版

工况适应性

Condition Adaptability

39.04分 (满分50分)
39.04 points (out of 50 points)

环境适应性

Environmental Adaptability

27.68分 (满分30分)
27.68 points (out of 30 points)

充电效能

Charging Efficiency

18.8分 (满分20分)
18.8 points (out of 20 points)

智能能效总得分

Total Score of Intelligent Energy Efficiency

85.52分/86%

85.52 points/86%



G 优秀	A 良好	M 一般	P 较差
G Good	A Acceptable	M Marginal	P Poor



中国智能汽车指数 导航智能驾驶（NP）测评结果

China Intelligent Vehicle Index

Navigation Pilot (NP) Rating Results

（2023年第四批）

(Batch 4 in 2023)



测评车型概览
Rating Model



测评结果
Rating Results



总结
Summary



智己 LS7 2023款

77kWh Urban Fit后驱
版



测评车型概览

Rating Model



测评结果

Rating Results



总结

Summary



智己 LS7 2023款

77kWh Urban Fit后驱版



车辆类型

Vehicle Type

纯电动多用途乘用车

整车型号

Vehicle Model

CSA6501LBEV5

生产厂家

Manufacturer

上海汽车集团股份有限公司

制造年月

Manufacture Date

2023-06

NP功能名称

NP Function Name

高速高架领航辅助功能 (NOA)

NP软件版本

NP Software Version

IMOS 2.3.0(P01MBY0)

车辆识别代号

VIN

LSJWL4095PS071425

传感器及算力配置

Sensor and Computation Configuration

类型

Type

数量/性能

Qty/
Performance

摄像头

Camera

11个

毫米波雷达

Millimeter-Wave Radar

5个

激光雷达

Laser Radar

0个

智能驾驶芯片 254TOPS

Intelligent Driving Chip



智己 LS7 2023款

77kWh Urban Fit后驱版



导航智能驾驶测评 (高速公路)

Navigation Pilot Evaluation
(Expressway)



车辆安全性得分: 73.80分/100分

Score of Vehicle Safety: 73.80/100

功能完成度得分: 98.57分/100分

Score of Functional Completion: 98.57/100

最终得分=min{车辆安全性得分, 功能完成度得分}=73.80分

Final Score= min {Score of Vehicle Safety Score and Score of Functional Completion} = 73.80 points

注: G+代表极优秀水平, 满分100分

Note: G+ = extremely excellent, with a full score of 100 points.

G+ 极优秀 G 优秀 A 良好 M 一般 P 较差
G+ Very Good G Good A Acceptable M Marginal P Poor

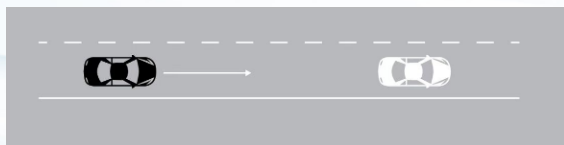


智己 LS7 2023款

77kWh Urban Fit后驱版

① 前车静止（直道）

Forward Vehicle Being Stationary (on a Straight Lane)



13.53分 (满分14分)

13.53 points (out of 14 points)

② 前车静止（直道）- 目标车偏置

Forward Vehicle Being Stationary (on a Straight Lane) - TV Being Offset



13.53分 (满分14分)

13.53 points (out of 14 points)

③ 前车静止（直道）- 目标车斜置

Forward Vehicle Being Stationary (on a Straight Lane) - TV Being Skewed

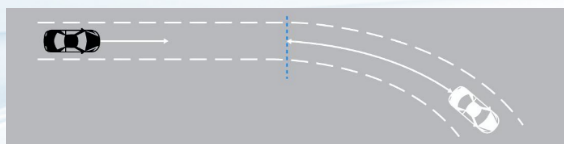


12.60分 (满分14分)

12.60 points (out of 14 points)

④ 前车静止（弯道）

Forward Vehicle Being Stationary (on a Curved Lane)

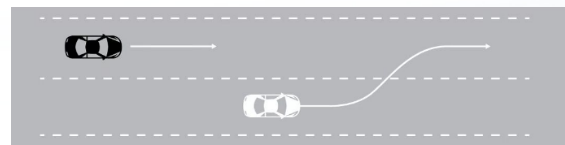


12.14分 (满分14分)

12.14 points (out of 14 points)

⑤ 前车切入

Forward Vehicle Cutting in

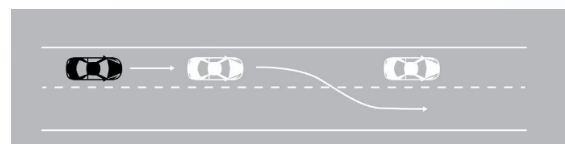


0分 (满分14分)

0 points (out of 14 points)

⑥ 前车切出

Forward Vehicle Cutting out

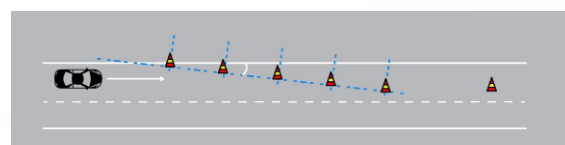


12.50分 (满分15分)

12.50 points (out of 15 points)

⑦ 交通锥避让

Avoidance of Traffic Cones



9.50分 (满分15分)

9.50 points (out of 15 points)

车辆安全性

Vehicle Safety

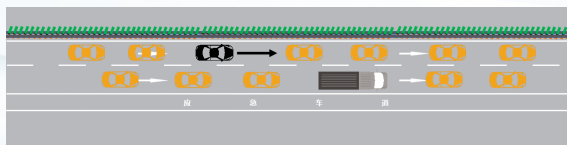
73.80分/100分

73.80 points/100 points



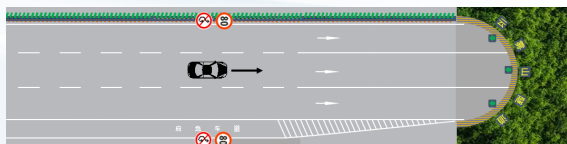
智己 LS7 2023款

77kWh Urban Fit后驱版

① 拥堵走停
Stop-and-Go Traffic

5.00分 (满分5分)

5.00 points (out of 5 points)

② 隧道通行
Tunnel Passing

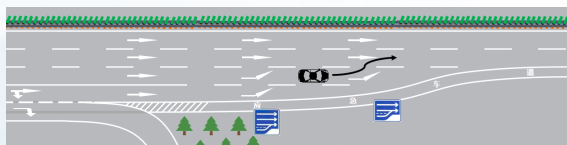
5.00分 (满分5分)

5.00 points (out of 5 points)

③ 车道尽头导航变道
Navigation for Lane Change at a Lane End

工况1: 主车车道前方及相邻车道无环境车

Condition 1: no surrounding vehicle in front of the SV's lane and in the adjacent lane

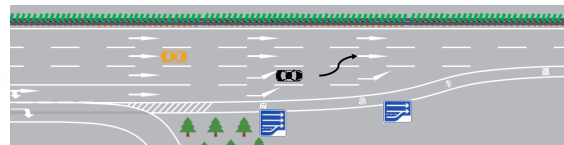


5.00分 (满分5分)

5.00 points (out of 5 points)

工况2: 主车车道前方无环境车, 相邻车道有 1 辆环境车

Condition 2: no surrounding vehicle in front of the SV's lane and 1 surrounding vehicle in the adjacent lane

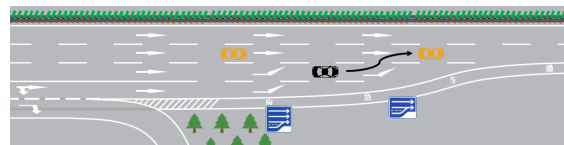


5.00分 (满分5分)

5.00 points (out of 5 points)

工况3: 主车车道前方无环境车, 相邻车道有 2 辆环境车

Condition 3: no surrounding vehicle in front of the SV's lane and 2 surrounding vehicles in the adjacent lane

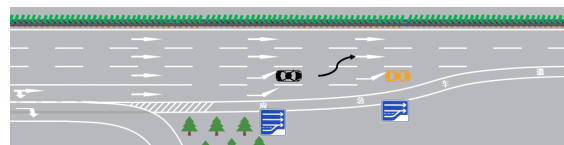


5.00分 (满分5分)

5.00 points (out of 5 points)

工况4: 主车车道前方有 1 辆环境车, 相邻车道无环境车

Condition 4: 1 surrounding vehicle in front of the SV's lane and no surrounding vehicle in the adjacent lane



5.00分 (满分5分)

5.00 points (out of 5 points)

功能完成度

Functional Completion

98.57分/100分

98.57 points/100 points

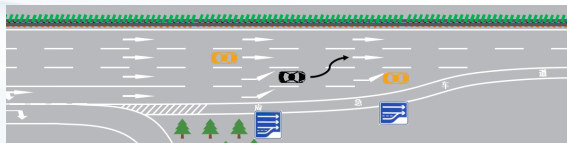


智己 LS7 2023款

77kWh Urban Fit后驱版

工况5: 主车车道前方有 1 辆环境车, 相邻车道有 1 辆环境车

Condition 5: 1 surrounding vehicle in front of the SV's lane and 1 surrounding vehicle in the adjacent lane

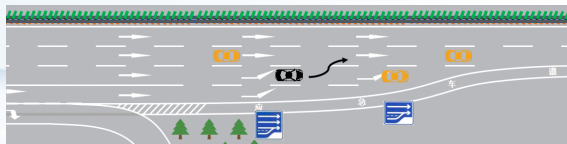


5.00分 (满分5分)

5.00 points (out of 5 points)

工况6: 主车车道前方有 1 辆环境车, 相邻车道有 2 辆环境车

Condition 6: 1 surrounding vehicle in front of the SV's lane and 2 surrounding vehicles in the adjacent lane



5.00分 (满分5分)

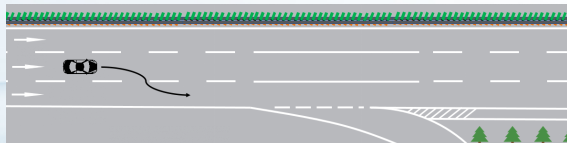
5.00 points (out of 5 points)

④ 高速汇出匝道

Expressway Exit Ramp

工况1: 主车车道前方及相邻车道无环境车

Condition 1: no surrounding vehicle in front of the SV's lane and in the adjacent lane



5.00分 (满分5分)

5.00 points (out of 5 points)

功能完成度

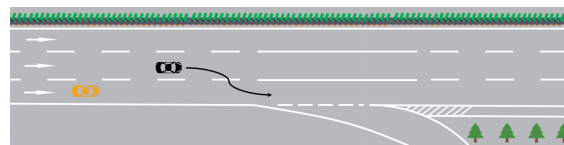
Functional Completion

98.57分/100分

98.57 points/100 points

工况2: 主车车道前方无环境车, 相邻车道有 1 辆环境车

Condition 2: no surrounding vehicle in front of the SV's lane and 1 surrounding vehicle in the adjacent lane

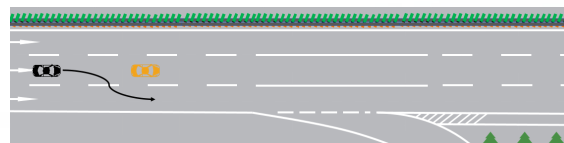


5.00分 (满分5分)

5.00 points (out of 5 points)

工况3: 主车车道前方有 1 辆环境车, 相邻车道无环境车

Condition 3: 1 surrounding vehicle in front of the SV's lane and no surrounding vehicle in the adjacent lane

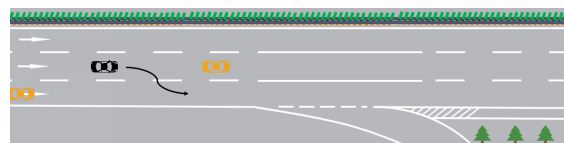


5.00分 (满分5分)

5.00 points (out of 5 points)

工况4: 主车车道前方有 1 辆环境车, 相邻车道有 1 辆环境车

Condition 4: 1 surrounding vehicle in front of the SV's lane and 1 surrounding vehicle in the adjacent lane



5.00分 (满分5分)

5.00 points (out of 5 points)

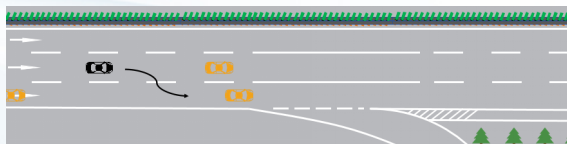


智己 LS7 2023款

77kWh Urban Fit后驱版

工况5: 主车车道前方有 1 辆环境车, 相邻车道有 2 辆环境车

Condition 5: 1 surrounding vehicle in front of the SV's lane and 2 surrounding vehicles in the adjacent lane



5.00分 (满分5分)

5.00 points (out of 5 points)

⑤ 匝道内路线选择

Route Selection in Ramp

工况1: 主车车道前方及相邻车道无环境车

Condition 1: no surrounding vehicle in front of the SV's lane and in the adjacent lane



5.00分 (满分5分)

5.00 points (out of 5 points)

工况2: 主车车道前方无环境车, 相邻车道有 1 辆环境车

Condition 2: no surrounding vehicle in front of the SV's lane and 1 surrounding vehicle in the adjacent lane



5.00分 (满分5分)

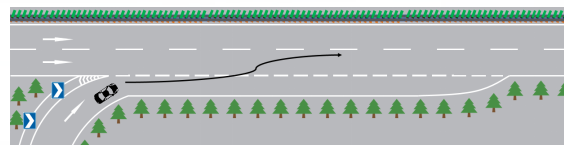
5.00 points (out of 5 points)

⑥ 匝道汇入高速

Ramp Entrance Expressway

工况1: 主车车道前方及相邻车道无环境车

Condition 1: no surrounding vehicle in front of the SV's lane and in the adjacent lane

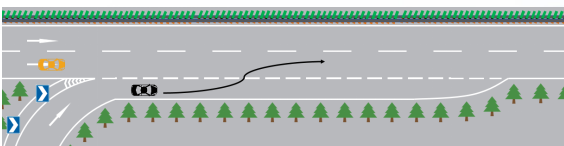


5.00分 (满分5分)

5.00 points (out of 5 points)

工况2: 主车车道前方无环境车, 相邻车道有 1 辆环境车

Condition 2: no surrounding vehicle in front of the SV's lane and 1 surrounding vehicle in the adjacent lane

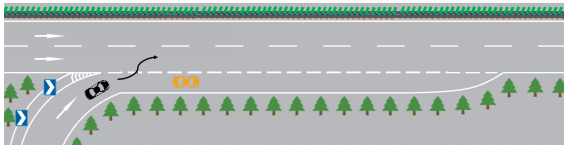


5.00分 (满分5分)

5.00 points (out of 5 points)

工况3: 主车车道前方有 1 辆环境车, 相邻车道无环境车

Condition 3: 1 surrounding vehicle in front of the SV's lane and no surrounding vehicle in the adjacent lane



5.00分 (满分5分)

5.00 points (out of 5 points)

功能完成度

Functional Completion

98.57分/100分

98.57 points/100 points



智己 LS7 2023款

77kWh Urban Fit后驱版

功能完成度

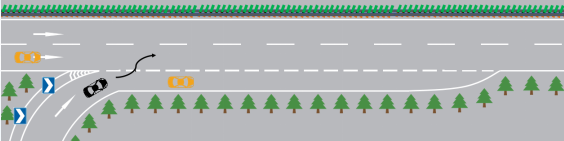
Functional Completion

98.57分/100分

98.57 points/100 points

工况4：主车车道前方有 1 辆环境车，相邻车道有 1 辆环境车

Condition 4: 1 surrounding vehicle in front of the SV's lane and 1 surrounding vehicle in the adjacent lane

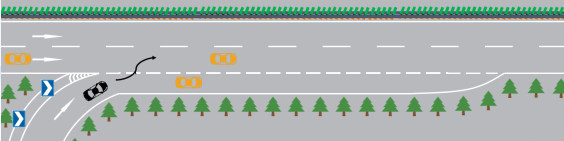


5.00分 (满分5分)

5.00 points (out of 5 points)

工况5：主车车道前方有 1 辆环境车，相邻车道有 2 辆环境车

Condition 5: 1 surrounding vehicle in front of the SV's lane and 2 surrounding vehicles in the adjacent lane



4.00分 (满分5分)

4.00 points (out of 5 points)

⑦ 额外扣分

Additional Penalty Points

扣分项 Deduction Item		实扣分 Actual Deduction
路段内 In a section	超过道路限速 Beyond the road speed limit	6.00
	变道不打转向灯 Lane change without turning on the turn signal	2.00
	压实线 Crossing a solid line	0
	感知系统误识别导致意料之外的制动或转向 Unintended braking or steering caused by misidentification of the sensing system	0
匝道内 In ramp	压实线 Crossing a solid line	0
	感知系统误识别导致意料之外的制动或转向 Unintended braking or steering caused by misidentification of the sensing system	0
NP功能ODD适应性 ODD adaptability of NP function	在主车ODD支持路段，NP功能无法正常激活，适应性差，影响驾驶员体验 In the ODD-supported section of the TV, the NP function cannot be activated normally and is not well adapted, affecting the driver's experience	0.43

⑧ 额外加分

Additional bonus points

加分项 Bonus Item	实加分 Actual Bonus
前方慢行车辆自主变道 Autonomous lane change due to the forward slow-moving vehicle	2.00
智慧避让侧方大型车辆 Intelligently avoid lateral heavy-duty vehicles	3.00
主车回避并行相邻车道环境车 SV avoidance of parallel surrounding vehicles in adjacent lanes	3.00



测评车型概览

Rating Model



测评结果

Rating Results



总结

Summary



导航智能驾驶 NP测评



智己 LS7 2023款

77kWh Urban Fit后驱
版

G+

G+ 极优秀 G 优秀 A 良好 M 一般 P 较差

G+ Very Good G Good A Acceptable M Marginal P Poor



•安全护航 智慧出行

• Guard by Safety, Travel with Intelligence